

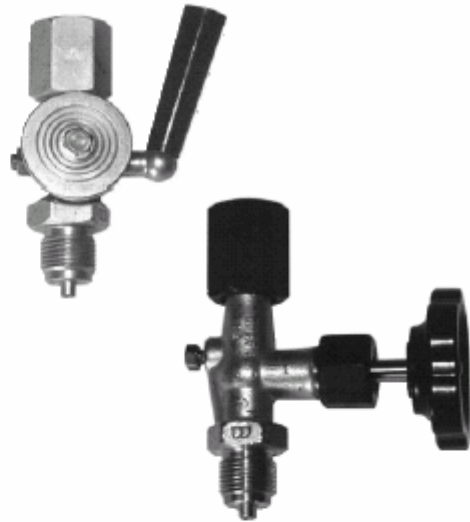
# Dome cock ARD Needle valves ARP

On any installation the mounting of a cock is recommended with a pressure measuring device. Thus the cock isolates the instrument and allows the dismantling of the instrument without process interruption.

Our range of dome cock and needle valves is especially well suited for implementation on liquid and gas pipes, at max. working pressure :

- type ARD in brass : up to 50°C
- type ARP in brass or steel : from -10°C to 120°C
- type ARP in stainless steel : from -20°C to 250°C

Even though our products have higher performances than those specified by the DIN 16 270 standard, be aware that to abide by this standard, the maximum working pressure is 250 bar, the maximum test pressure is 400 bar for all types of material.



## Characteristics, sizes (in mm)

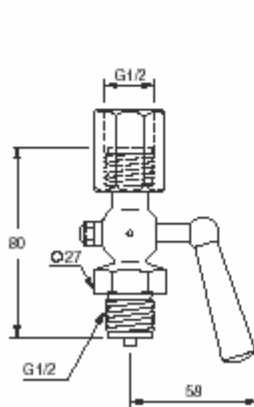
### ARDL in brass

|                    |  |
|--------------------|--|
| Working pressure   | 25 bar.  |
| Test pressure      | 40 bar.  |
| Temperature rating | -10 to +50°C   |
| Material           | brass  |
| Connection thread  | Process : G 1/2 male<br>Gauge : adjusting nut<br>G 1/2 female (in steel) |

### ARPL in brass / ARPA in steel

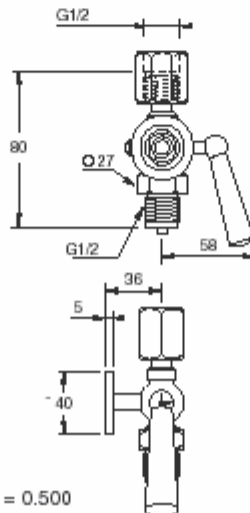
|                        |  |
|------------------------|--|
| Working pressure       | 250 bar (ARPL), 400 bar (ARPA)   |
| Test pressure          | 400 bar (ARPL), 600 bar (ARPA)   |
| Body material          | Brass Cu Zn 39 Pb3 (ARPL)<br>Steel C 22-8 (ARPA)                         |
| Valve stem, valve cone | Stainless steel (ARPL), steel (ARPA)                                     |
| Connection thread      | Process : G 1/2 male<br>Gauge : adjusting nut G 1/2 female<br>(in steel) |
| Temperature rating     | -10 to +120°C  |
| Packing ring           | PTFE   |

### ARDL 03L



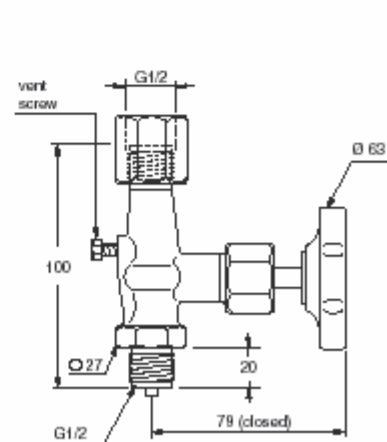
= 0.420

### ARDL 23L with test flange



= 0.500

### ARPL 03L / ARPA 03L with vent screw



= 0.550



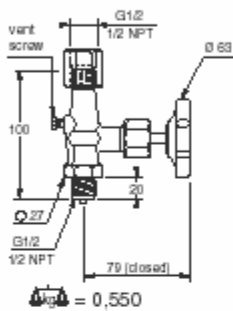
## Characteristics, sizes (in mm), options

### ARPX in stainless steel

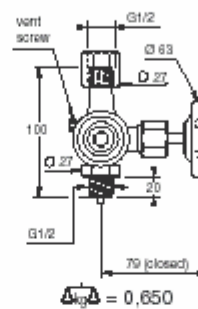
|                    |  |
|--------------------|--|
| Working pressure   | 400 bar  |
| Test pressure      | 600 bar  |
| Connection thread  | Process: G 1/2 male<br>Gauge : adjusting nut<br>G 1/2 female |
|                    | or<br>Process: 1/2 NPT male<br>Gauge : 1/2 NPT female        |
| Temperature rating | -20 to +250°C  |
| Material           | 1.4571 (AISI 316 Ti) stainless steel                         |
| Packing ring       | PTFE up to 200°C<br>Graphite up to 250°C                     |

### ARPX in stainless steel, with test flange

|                    |  |
|--------------------|--|
| Working pressure   | 60 bar   |
| Test pressure      | 60 bar   |
| Connection thread  | Process: G 1/2 male<br>Gauge : adjusting nut<br>G 1/2 female |
| Temperature rating | -20 to +250°C  |
| Material           | 1.4571 (AISI 316 Ti) stainless steel                         |
| Packing ring       | PTFE up to 200°C<br>Graphite up to 250°C                     |



**ARPX 03L/06N**  
with vent screw



**ARPX 23L**  
with test flange ø 40  
(60 bar),  
with vent screw

#### Options on request :

- Particular feature : the ARDL 03L may be made in steel and the ARDL 23L in stainless steel, when used on ammonia.
- Cleanliness for oxygen service (ARPX only).

#### Recommendations :

- The gasket (for 1/2" gas) must always be fitted around the spigot of the pressure measuring device.
- Present regulations in France make no provisions about the use of test gauges with test flange for ranges over 60 bar. See ARPX 23L.
- For higher temperatures (up to 250°C) please consult us.

## Codification

|                                      |                                      |          |           |  |          |          |          |  |
|--------------------------------------|--------------------------------------|----------|-----------|--|----------|----------|----------|--|
|                                      | <b>A</b>                             | <b>R</b> |           |  |          |          |          |  |
| <b>Family :</b>                      | Accessories _____                    | <b>A</b> |           |  |          |          |          |  |
| <b>Type :</b>                        | brass dome cock _____                |          | <b>DL</b> |  |          |          |          |  |
|                                      | brass needle valve _____             |          | <b>PL</b> |  |          |          |          |  |
|                                      | steel needle valve _____             |          | <b>PA</b> |  |          |          |          |  |
|                                      | stainless steel needle valve _____   |          | <b>PX</b> |  |          |          |          |  |
| <b>Model :</b>                       | with vent screw (sauf ARDL) _____    |          |           |  | <b>0</b> |          |          |  |
|                                      | with test flange _____               |          |           |  | <b>2</b> |          |          |  |
| <b>Connection thread (process) :</b> | G 1/2 male _____                     |          |           |  |          | <b>3</b> |          |  |
|                                      | 1/2 NPT male _____                   |          |           |  |          | <b>6</b> |          |  |
| <b>Connection thread (gauge) :</b>   | G 1/2 female (ARPX 03L only) _____   |          |           |  |          |          | <b>L</b> |  |
|                                      | 1/2 NPT female (ARPX 06N only) _____ |          |           |  |          |          | <b>N</b> |  |

Modifications reserved