



Pipe Separator Series 1650 Sandwich Version acc. to DIN 2526

Application	Mounting to Bourdon tube pressure gauges or to pressure transmitters for indirect pressure measurement, to be inserted between DIN-flanges for steel pipes in the chemical and process industry.
Execution	The pipe separator is inseparably fixed with the pressure measuring instrument to a hydraulic measuring unit, either directly, via a cooling element or via a capillary tube of stainless steel.
Type of construction	Pipe separator with internal moulded diaphragm, manufactured by the patented HAENNI procedure. All parts in stainless steel, welded.
Connection	Flanges with or without sealing strip acc. to DIN 2526 (gaskets up to 40 bar acc. to DIN 2690, up to 250 bar acc. to DIN 2698)
Temperature of medium	Up to 80°C (1/2 h up to 140°C), other temperature limits (up to 300°C) on request.
Special models	E-CTFE/PFA coated, Hastelloy on request.
Hydraulic transmission fluid	Silicon oil (standard), others on request.



Selection chart

Type	Material ¹⁾ of Separator body		Material ¹⁾ of Separation element (tube diaphragm)			Material ¹⁾ of Connecting muff (not in contact with the medium)		DN ¹⁾	PN	Ordering code
Pipe separator	stainless steel 1.4571		stainless steel 1.4571			stainless steel 1.4435		25	40/250	1653
			stainless steel 1.4404 / 1.4435			stainless steel 1.4435		40	40/250	1655
			stainless steel 1.4404 / 1.4435			stainless steel 1.4435		50	40/250	1656
			stainless steel 1.4571			stainless steel 1.4435		65	40/250	1657
			stainless steel 1.4571			stainless steel 1.4435		80	40/250	1658
			stainless steel 1.4571			stainless steel 1.4435		100	40/250	1659
Capillary tube 1.4571	Length [m]	0,5	1	1,5	2	2,5	3	3,5		
	Ordering code	1205	1210	1215	1220	1225	1230	1235		
Additional metallic protection hose for capillary tube									1299	
Temperature of medium (e.g. 100 °C)									9007/0100	
E-CTFE coated									1361	
Ordering example: DRC-100/611.133/075 / 1656 / 3400 / 9007/0100 										

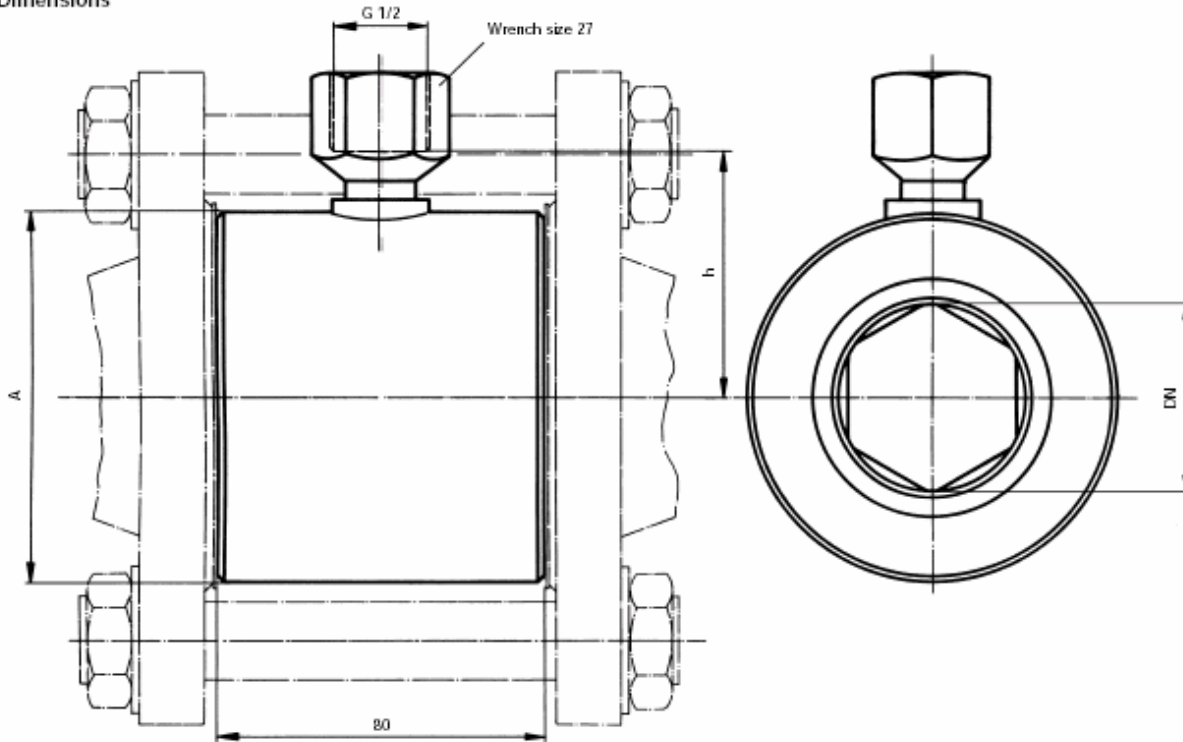
¹⁾ Other materials and diameters on request

Construction and Function

The separator body is produced from one piece. This construction guarantees absolute safety, even at higher pressures in the pipe system. The maximum permitted pressure is limited by the flanges and gaskets mounted by the user on site. The tubular diaphragm, longitudinal in flow direction, is welded at both ends to the separator body and has a hexagonal- or octangular profile (depending on DN). The pipe separator transmits the pressure of fluids flowing in pipes. Dead-zone-free transitions to flange connection fittings and the optimal-flow design prevent the formation of deposits and make cleaning possible without dismounting the separator from the pipe system. The interior shape does not cause considerable cross-section reduction.

Pipe Separator Series 1650 Sandwich Version acc. to DIN 2526

Dimensions



Dimension chart

DN	A [mm]	h [mm] standard	h [mm] long model (additional ordering code 0400) ¹⁾	Weight [kg] ¹⁾	Inner shape
25	63	42	82	1,8	6-sided
40	85	53	93	2,8	6-sided
50	95	58	98	3,6	6-sided
65	115	68	108	4,8	8-sided
80	130	75	115	5,5	8-sided
100	148	84	124	6,4	8-sided

Pressure ranges (directive values)

Mounting to pressure gauge or pressure transmitter		NS 100	NS 160	ED 518
Pressure ranges [bar] with nominal size (DN)	25	4...40/250	6...40/250	²⁾
	40	1.6...40/250	2.5...40/250	
	50	1.6...40/250	1.6...40/250	
	65	1.6...40/250	1.6...40/250	
	80	1.6...40/250	1.6...40/250	
	100	1.6...40/250	1.6...40/250	

¹⁾ For longer model additional 0,7 kg.

²⁾ On request: Electronic pressure transmitters can be used for pressures > 250 mbar without impairing the accuracy. Please fill in page D1.201 so that we can properly access your needs.

³⁾ See data-sheet D1.250