

The **AN42** digital indicator provide excitation voltage ( 28V with 75  $\Omega$  shunt resistance) for 4-20 mA or 0-20 mA pressure and temperature transmitters. Various engineering units are available. Overall systems (Bourdon-Haenni transmitters + indicator) can be adjusted or calibrated in factory. All programming operations (0, full scale and set points) are implemented on the front panel.

- 10.000 counts LED display
- 4-20 mA or 0-20 mA input
- Transmitter excitation
- Average value
- 2 set points (AN41)
- Analog output (0-10 V)
- Zero and span adjustment on front panel
- Meet the toughest requirements of electromagnetic compatibility standards EN 50081 and EN 50082 (European directive : 89/336/CEE).
- Measurement units : bar, kPa, kg/cm<sup>2</sup>, psi, °C, °F,...



### Specifications (20°C), options

**Display :**

-1999 to +9999 counts, red LED.  
Overrange : display dEP  
Decimal point programmed on front panel.

**Power supply :**

230 V / 50 Hz. Consumption : 6 W

**Excitation voltage output :**

28 V, 75  $\Omega$   
Permanent short - circuit max. current : 50 mA  
Current input shunt value - 75  $\Omega$

**Input :**

0-20 mA or 4-20 mA (2 wires).

**Operating temperature :**

0 to + 85°C

**Storage temperature :**

-40 to + 85°C

**Tightness :**

IP20 according to NF EN 60529

**Accuracy :**

$\pm 0.1\%$  F.S.  $\pm 1$  count

**Reading rate :**

7 readings / s

**Alarms :**

2 programmable independent thresholds  
1 contact changeover relay, 1A, 220 V cos  $\phi$  0.7  
Fully adjustable switches on the display range  
Relays on when signal above set point (can be reversed).

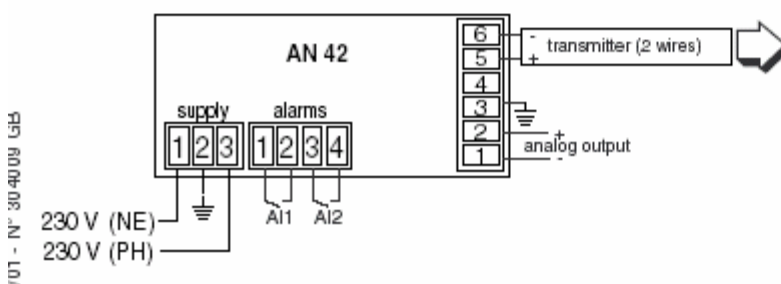
**Analog output (non isolated) :**

0-10 V (standard) or 4-20 mA (option), low-scale and high-scale values are adjustable on the full range.  
Max current output limited to 50 mA/750  $\Omega$   
Max current (voltage output) limited to 10 mA/75  $\Omega$ .

**Options**

- 110 V/50 Hz, 48 V/50 Hz, 24 V/50 Hz, 24 Vdc power supply,
- Front panel IP55
- Front Keypads
- Analog output 4-20 mA
- Calibration with certificate Q1060

### Wiring

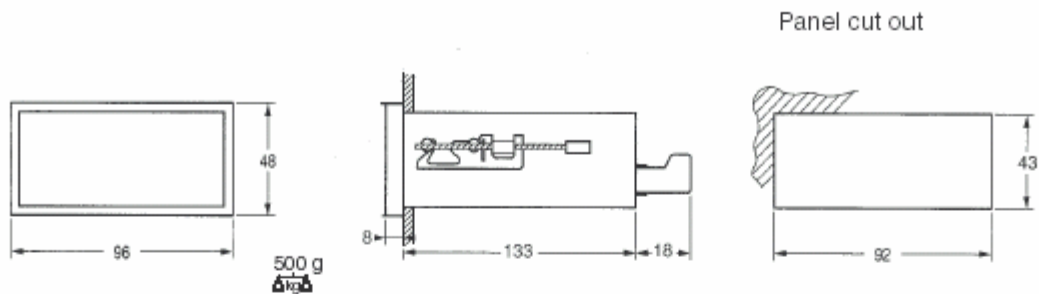


TRANSMITTER	PRESSURE	leaflet n°
	EN113 E/Y913, E/Y923, E/Y933, E/Y943 E/Y8903 X913/X513 EF53 E813/Y8913	CAT. 304100
TRANSMITTER	TEMPERATURE	leaflet n°
	E71TR/Y71TR E76TR/Y76TR	304008

701 - N° 304008 GB



## Dimensions (mm)



## Codification

	<b>A</b>	<b>N</b>	<b>4</b>	<b>2</b>		<b>0</b>	<b>2</b>			<b>*</b>
<b>Family :</b>										<b>Transmitter with indicator calibrated together :</b>
Accessories										<b>0</b> without
Electronic	<b>A</b>									<b>1</b> physical unit display (to specify bar, psi, daN)
<b>Type</b>	<b>N42</b>									<b>2</b> end points calibration (zero and span)
<b>Power supply :</b>										<b>3</b> Q1060 calibration certificate 21 points
220 Vac (standard)					<b>A</b>					<b>5</b> Q1060 calibration certificate 11 points
110 Vac					<b>D</b>					
24 Vac					<b>E</b>					
24 Vdc					<b>F</b>					
48 Vac					<b>J</b>					
<b>Output signal :</b>										
(copy)										
0-10 V							<b>02</b>			
4-20 mA							<b>03</b>			
<b>Tresholds :</b>										
2 tresholds								<b>2</b>		

\* Uncoded options have to be listed after the code number