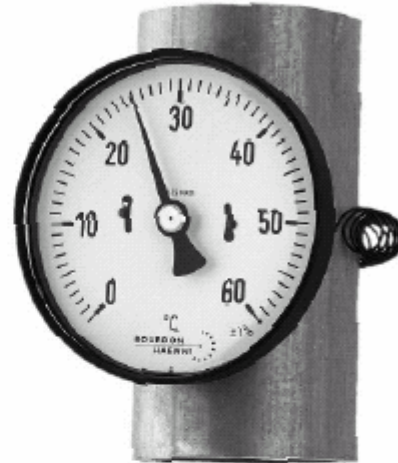




Bimetal pipe Mounting Thermometers TBA Ø 72

Application	For temperature measurement on pipes	
Temperature range	0 ... 120°C	
	0 ... 60°C	
	-20 ... 40°C	
Accuracy	± 1% of full scale ¹⁾	
Case	Black synthetic material, heat resistant, max. 110°C	
Dial	White aluminium, black graduation, DIN 16 109 (NS 80), 16 128 Graduation according to catalogue sheet T0.305	
Zero adjustment	At the back of the case, ± 4°C	
Pointer	Aluminium, anodized in black	
Window	Synthetic material	
Mounting	Spring, for pipes 1...5"	
Fitting position	Any, revolving mounting flange	
Order No.	0 ... 120°C	TBA 72/112.111/20T
	0 ... 60°C	TBA 72/112.111/11T
	-20 ... 40°C	TBA 72/112.111/52T



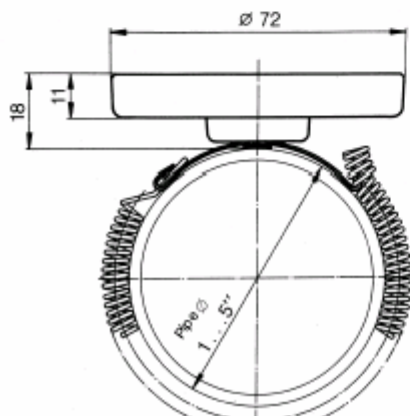
Note:
1) Test condition: bright steel pipe Ø 48 medium: water, alcohol for temperature less than 0°C

Mounting

The Pipe Thermometer TBA 72 can be mounted with the attached spring to pipes of diameter sizes 1 ... 5" in any possible angle or position. The mounting bracket has been designed to

give optimum transmission of the heat from the pipe to the measuring instrument and allows exact measurement without heat transmission paste.

Dimension





Bimetal Thermometers TB-FIX Ø 80 - 100

Application	For temperature measurements of liquids and gases in pipes with max. Ø 2 inches which are insulated
Temperature range	-20 ... 160°C
Accuracy	According DIN 16203 Cl. 1 (see mounting instructions)
Dial	white, graduations black DIN 16109, 16128. For graduation marking and layout, see T0.305
Pointer	Aluminium alloy black, resemb. DIN 16099
Zero adjustment	At the back of the case
Window	Normal glass
Protection	IP 50 DIN 40050
Accessories	Base and hose clamp



Selection chart

System design	Standard	TBHA xxx / xxx.xxx
Nominal size		
NS 80		80
NS 100		100
Case and ring		
Stainless steel 1.4301, brush finished		2
Structural shape		
Direct mounting		1
Immersion tube outlet		
Center back		2
Indicator		
Standard		1
Immersion tube / diameter / material		
8 mm, stainless steel 1.4571 (standard)		6
Immersion tube / installed length l_T		
55 mm (fit to s = 30–50 mm)		1
75 mm (fit to s = 50–70 mm)		2
95 mm (fit to s = 70–90 mm)		3
115 mm (fit to s = 90–110 mm)		4

Range

Order number	Range °C
52 T*	-20 ... 40
11 T	0 ... 60
27 T	0 ... 80
12 T	0 ... 100
20 T	0 ... 120
13 T*	0 ... 160

* on request

See page 2 for accessories



Selection Chart for Installation accessories

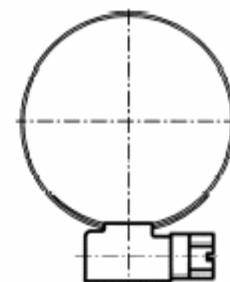
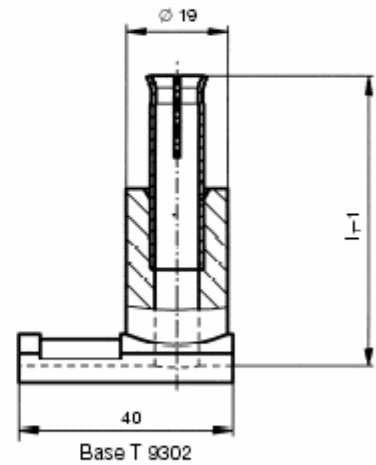
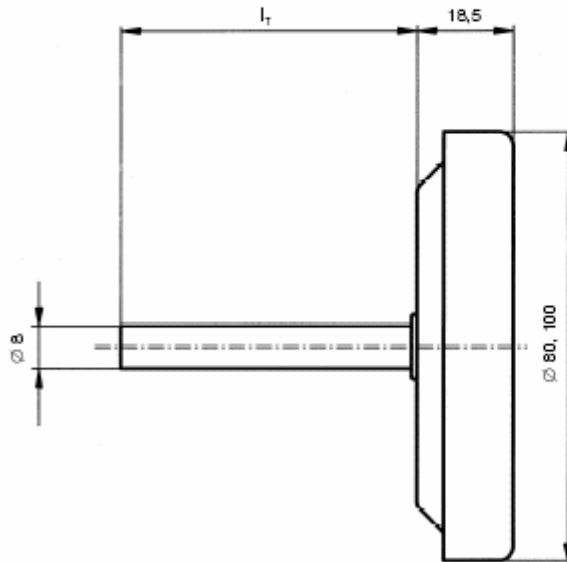
Base for insulating material thickness s:

30- 50 mm	Order number	T 9302.0000
50- 70 mm	Order number	T 9302.0001
70- 90 mm	Order number	T 9302.0002
90-110 mm	Order number	T 9302.0003

Hose clamp for pipe diameter D: DIN 3017

27-42 mm (¾-1¼ inches)	Order number	A 8476.0000
42-60 mm (1¼-2 inches)	Order number	A 8476.0001

Dimensions



Hose clamp A 8476

Mounting instructions

